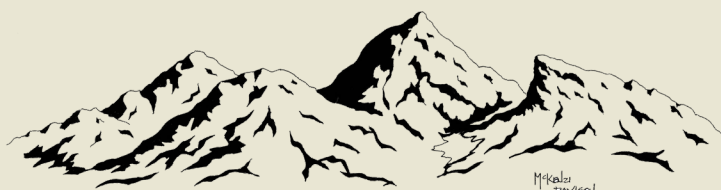


BIG PINEY & MARBLETON

Wyoming



VISITOR'S GUIDE



BIG PINEY-MARBLETON

COMMUNITY DEVELOPMENT

"Where the Desert Meets the Mountains"

WWW.BIGPINEY-MARBLETON.COM



@Big-Piney-Marbleton-Community-Development



@bigpineymarbleton



HISTORY

The commonly asked question “Why are there two towns so close together – Marbleton and Big Piney?” has a simple answer: difference of opinion. Local historians agree that Daniel B. Budd created the town of Big Piney by locating the basics of a blacksmith shop, general store, post office and hotel, at the site of his 1879 homestead. Soon after his family joined him there, he donated land for a school, effectively designating a permanent town at the present-day location.

When Daniel B. Budd died in 1902, his family continued to homestead and develop the outlying areas as part of a greater community. Early pictures make it seem that there was plenty of room for a town to grow at Big Piney, but one of the sons, Charles, felt that Big Piney’s location was constricted by the boggy, wet meadows which surrounded the town incorporated in 1913. A mile north of Middle Piney Creek and Big Piney, Charles Budd built on property of his own, offering an adjacent town on higher, dryer soil. That town, Marbleton, was incorporated in 1914.

Budd and his partner Hugh McKay brought a thousand head of cattle from Nevada hoping to ship them at Point of Rocks, but winter caught up to them here in the Green River Valley. The following year Dan Budd moved his family here and that is how the settlement of this town began. Big Piney had the coldest year round average temperature of any place nationally. Big Piney was called “Ice Box of the Nation” when it was officially made a weather station in 1930.



POPULAR ATTRACTIONS

GREEN RIVER VALLEY MUSEUM

With a campus of seven buildings featuring diverse and detailed exhibits the GRVM brings to life a shared history between Pioneers, Native Americans, Homesteaders, and others who would eventually create the communities of Sublette County we know today. Thousands of locally donated artifacts compose a collection that is bound to have something for everyone. Admission is free. 206 N. Front St Big Piney (307) 276-5343



FLICKS N PINS

We are a family entertainment center with a two-screen movie theater and a 14-lane bowling alley. We are USBC Certified and a member of the Greater Bridger Valley Bowling Association.

619 East 1st St. Marbleton, (307)276-4061 for Bowling Information and reservations, (307) 276-4062 for Movie Information

Open Monday - Thursday: 3:00pm - 10:00pm Friday: 3:00pm - Midnight

Saturday: Noon - Midnight Sunday: Noon - 10:00pm

BIG PINEY RECREATION CENTER

At the Big Piney Rec Center, we offer activities for the whole family. From adult workout classes and coed sports to youth sports like basketball, volleyball and football to name a few. Our facility provides a safe environment for the community. We have different rates for memberships including day, monthly, yearly. Membership gives access to all of our rooms including: Cardio room, heavy weight room, TRX room, dance/spin room and two gyms. Veteran's discount available

650 Piney Drive, Big Piney (307) 276-4071

SOUTHWEST SUBLETTE COUNTY PIONEERS SENIOR CITIZEN CENTER

A Senior Citizen Center that promotes socialization for Senior Citizens 60 years of age and older in Marbleton, Big Piney and surrounding areas.

429 E 1st St. Marbleton, Wyoming 83113 | Open Monday through Friday 8:00am to 4:00pm (Closed Holidays). Lunch is served Tuesday-Thursday at noon. (307) 276-3249

SUBLETTE COUNTY LIBRARY - BIG PINEY BRANCH

The Big Piney Library is a community center. Through our collections and inviting spaces, we provide the opportunity to access information, engage with culture and experience lifelong learning. Free WiFi.

106 Fish St. Big Piney, (307) 276-3515, sublettecountylibrary.org

Open Monday - Friday: 10:00 am - 6:30 pm, Saturday: 10:00 am - 2:00 pm



FAIRGROUNDS & FAIR

SUBLETTE COUNTY FAIRGROUNDS AND FAIR

The Sublette County Fairgrounds and Event Center sits on 80 acres in the Big Piney/Marbleton area of Sublette County Wyoming. The facility consists of one classic outdoor full size rodeo arena and a team roping arena both with portable bleachers to seat 160-1500 people. We offer a full size indoor rodeo arena with indoor warm up arena next to the main arena and concession. Our Event Center is a big blank canvas. It is a two acre building with a concrete floor and its possibilities are endless. During our dirt season we offer horse shows, livestock jackpots and cow cuttings. Our off dirt season is especially nice for banquets, weddings, parties and indoor archery shoots in the cooler months. If you're looking for a smaller venue we have a wonderful building that was moved on the grounds years ago that has had many hats in the County we call it the Community Center. It is a quaint building with a hardwood floor and full working kitchen and also an elevated stage it has been perfect for family reunions, birthday parties and dances. The end of July you will find us in full County Fair mode.

We have one of the friendliest County Fairs around! Sublette County Fair is fun for all ages and is held in late July every summer.

To find more information about the Sublette County Fair, please visit:
www.sublettecountyfair.com.

The fairgrounds are just north of Marbleton, WY, on US Highway 189. 10937 HWY 189 Big Piney, WY (307) 749-3546





AIRPORT & GOVERNMENT

AIRPORT

Big Piney-Marbleton Airport offers a state of the art facility to serve you. Our self serve 100 LL and Jet A terminal is available 24-hours per day. We also offer Full Service Jet A and are a CAA approved facility. Relax in the Pilot's Lounge, complete with Direct TV and complimentary Wifi, indoor heated hangar space and transportation is available. Come visit us today!

**56 Big Piney Airport Rd. Marbleton, Wyoming
(307) 276-4022**

MARBLETON/BIG PINEY MEDICAL CLINIC

Originally a physician-directed clinic, the Marbleton-Big Piney Clinic was acquired by the Sublette County Rural Health Care District in 2005. The Marbleton-Big Piney Clinic is joined by the Pinedale Medical Clinic and Sublette County EMS in providing essential health care needs to the residents and visitors of Sublette County, Wyoming.

**103 W Third St Marbleton, Monday-Friday 8am - 5pm
Call (307)-276-3306**

POST OFFICE

Located in Sublette County, Wyoming. You are able to submit your US passport application at this Big Piney Post Office for processing.

420 Budd Ave, Big Piney, WY 83113

Marbleton Town Hall

**10700 Hwy 189, Marbleton
Call (307) 276-3815
marbletonwyo.net**

Big Piney Town Hall

**401 Budd Ave, Big Piney
Call (307) 276-3554
bigpiney.us**

LODGING & RESTAURANTS

MARBLETON INN

34 Rooms with wireless internet, satellite TV, queen beds, friendly staff.

Refrigerator and microwave in rooms. On-site restaurant.

Locally owned since 1982.

405 Winkelman Ave Marbleton

(307) 276-5231

ROB'S ROOST

14 Full service pull through RV Sites (30/50 AMP) with grass, picnic tables and mature trees. Showers and laundry facilities are available. Within walking distance to restaurants, taverns, convenience stores, parks, movie theater, bowling and recreation center!!

An abundance of lakes, rivers and streams with plenty of fishing and wild-life! We also offer studio cabins for rent and free WiFi and showers.

16 3rd St, Marbleton. (307) 276-3611

THE BENCH GRILL

The Bench serves classic diner-style food with some stand-out specials. It's a great place to get a burger and fries or pizza. Open breakfast, lunch, dinner and all the times in between. Take out and catering also available.

415 Winkelman Ave Marbleton (307) 276-4745

Open Tues-Sat: 7 am - 9 pm (closed Mondays) Sunday: 8 am - 2 pm

LA CABANA

With its welcoming atmosphere and friendly staff, this is a great place to get authentic Mexican food (try the burritos - they're always a hit). The best part is, it's right across the street from the museum!

120 Budd Ave Big Piney, Wyoming 83113

(307) 276-5776

TURQUOISE BUFFALO

You need coffee and this is the favorite place to get it. Service is fast, making it the perfect place to stop for a cup on the way to work. They have a large assortment of coffees and other beverages, hot and cold.

121 Smith Ave. Big Piney, Wyoming 83113

(307) 260-5073

WATERHOLE #3

Great local pub/bar with a fun small town atmosphere. Full service bar, draft beer & wine, burgers pizza, appetizers. We also have a golf simulator, ping pong and pool tables.

417 Main, Marbleton, WY 83113 (307)-276-9977

Open Mon-Sat 11am-2am Sun 11am-10pm

COUNTRY CHALET MOTEL

Small town hotel and the nicest people! Great staff and spacious rooms.

9 Main Street, Marbleton, WY (307) 276-3391 or (307) 260-8431

SILVER SPUR BAR

106 N. Front St., Big Piney, WY (307) 276-9967 Open 10 am - 2 am

SUBWAY - Great subs made daily!

HWY 189, Marbleton, WY (307) 276-3263 Open: 7:00 am - 9:00 pm

BIG PINEY MOTEL

216 Front St., Big Piney. (307) 231-3936 or (307) 723-6805

THE PAINTED KETTLE - Tea Bar, Doghnut & Gift Shop

Tea Bar, Doughnut & Gift Shop. Offering highest grade Loose Leaf Tea, Hot Cocoa, Espresso & flavored coffee + ice cream, shakes and more!

16 E. 3rd St., Marbleton. (307) 264-0709 Hours: Tues.- Sat. 7:30a-4p (Summer) / Tuesday- Saturday 7:30a-3p (Winter) Closes an hour earlier on Sat.

SHOPPING

ALTITUDE DRUG

Local pharmacy with quality products at affordable prices. Providing the personalized attention and customer service you expect!

215 Budd Ave., Big Piney (307) 392-0975

BURNEYS

This is our local grocery store and has been for over 110 years! It has a wide variety of fresh produce, deli products, frozen meals, canned goods, and common household appliances that might come in handy during your stay.

501 N Nichols St., Big Piney (307) 276-3321

JUST IMAGINE

Flower shop in Big Piney with a big selection of home decor, Goose Creek Candles, women's accessories, sweatshirts, antiques, and holiday decor.

305 Budd Ave., Big Piney (307) 276-5410

OBOS DELI/GROCERY

Your one stop for gas, groceries and a full deli, featuring fresh items daily! Stop in and let our friendly staff help you with all of your needs.

10615 Highway 189 Big Piney (307) 276-3070

OFFICE OUTLET

Your business super center!

306 Budd Ave Big Piney (307) 276-5250



SCHOOLS

BIG PINEY ELEMENTARY SCHOOL

Our mission is to build a strong academic foundation and core values that instill confidence to be successful in an ever-changing world!

630 Budd Ave Big Piney, (307) 276-3313

Office Hours: 7:30-4:00 School Hours: 8:15-3:20 www.sublette9.org

BIG PINEY MIDDLE SCHOOL

Big Piney Middle School is committed to creating and maintaining a consistent, effective, safe, and enjoyable environment in which students can obtain a firm educational foundation and develop self-confidence, a sense of responsibility, and life-long learning skills.

201 S. Nichols St. Big Piney, (307) 276-3315

Office Hours: 7:30-4:00 School Hours: 8:15-3:25 www.sublette9.org

BIG PINEY HIGH SCHOOL

Providing knowledge and skills for success.

916 Piney Drive/Big Piney (307) 276-3324

Office Hours: 7:30-4:30 School Hours: 8:05-3:23 www.sublette9.org

SWIMMING POOL

BPMS Swimming Pool is open to the public. Call for hours

916 Piney Drive (Big Piney High School) Phone: (307) 276-5599 www.sublette9.org



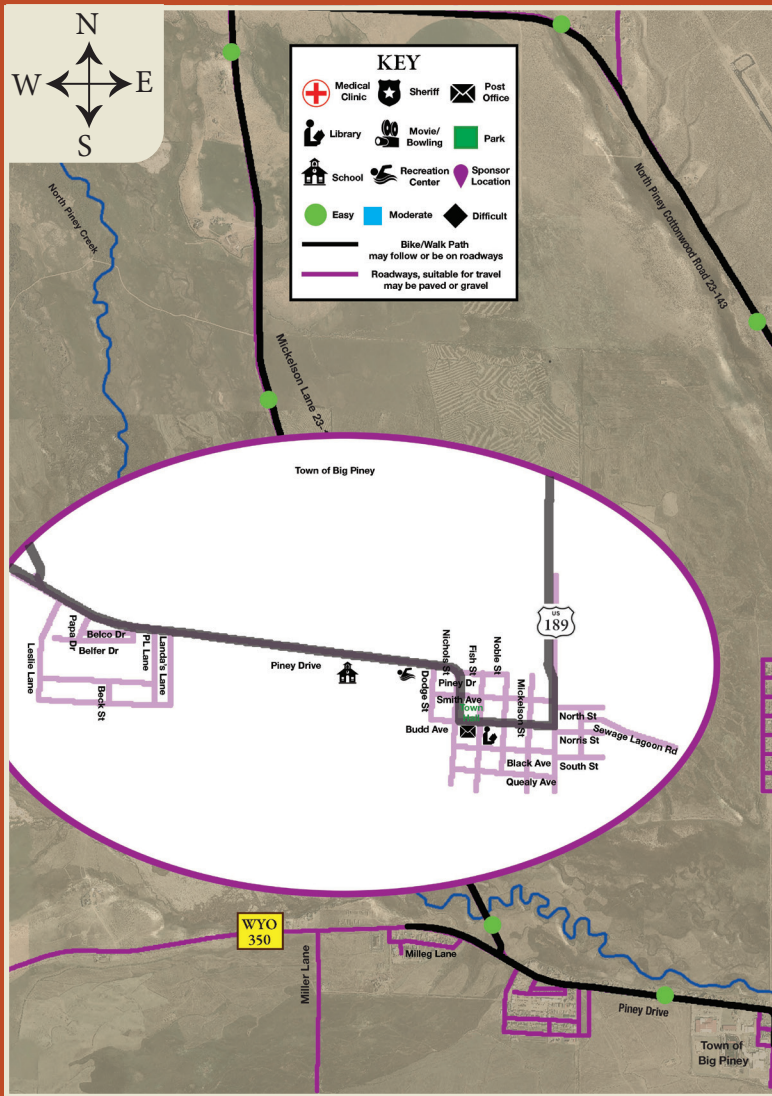
THE LANDER TRAIL

From 1859 to 1869, approximately 50,000 emigrants headed for Oregon and California crossed through the Green River Valley on the Lander Trail wagon road. Built in 1858, the Lander Trail was the first federally funded and constructed road in the American West. It was a shortcut from South Pass to Fort Hall. There are 97 miles of the trail in what is now Sublette County providing a variety of experiences for visitors including desert, forest and river crossings.

The trail crosses the Sublette County fairgrounds going through the middle of the Ag Center building and continuing up the hill to the airport. Visitors to the fairgrounds can hike the short 1/4 section walking in the steps of the emigrants. The New Fork River Crossing park provides visitors an emigrant river crossing experience eleven miles east of the fairgrounds on Highway 351.

Guided walking historical tours and wagon rides tours are often scheduled along parts of the trail in the summer.





EVENTS BY MONTH

JANUARY

Chinese New Year at the Library,
 Jr. Puncher Basketball,
 Bingo Senior Center

FEBRUARY

Father Daughter Dance,
 Bingo Senior Center,
 Pedigree Stage Stop Race

MARCH

CoEd Volleyball, Bingo Senior
 Center, Hell Hole Archery Shoot,
 Hell Hole Archery Indoor Shoot,
 Hard Hats & Stetsons,

Heritage Month at the Library

APRIL

Sublette County Spring Fair & Rum-
 mage Sale, Bingo Senior Center

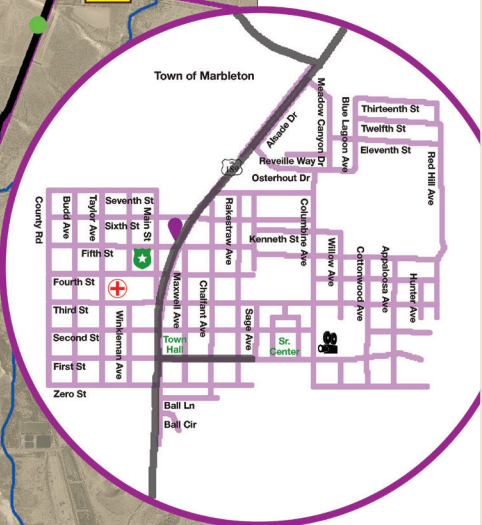
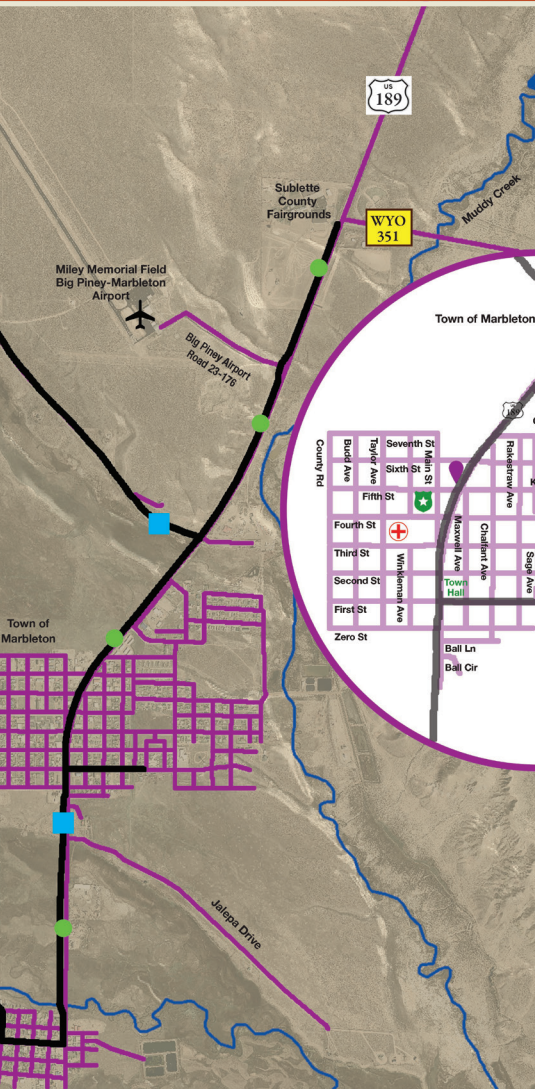
MAY

Bingo Senior Center
 PFAC Kentucky Derby Fundraiser

JUNE

Summer Camp Registration,
 Hell Hole Archery Summer Shoot
 Gen & Mineral Show
 Volunteer Fire Dept. Catfish Fry

BIG PINEY AND MARBLETON



PROVIDED BY:

601 N. Hwy 189
Big Piney, WY

Fly-in & Car Show
Green River Valley Museum Opens

JULY

- Chuckwagon Days**
- 4th July Parade & Street Dance
 - Free BBQ and picnic
 - Rodeo and Concert
 - Fireworks

Sublette County Fair
Fair Art Show

AUGUST

Jr. Puncher Football,
Jr Puncher Volleyball,
Soccer

SEPTEMBER

Bingo Senior Center, After School Programs begin at Library

OCTOBER

Halloween Carnival & Haunted House, CoEd Volleyball, Home Coming Bonfire, Bingo Senior Center, Fall Festival

NOVEMBER

Jr. Puncher Wrestling, Bingo Senior Center, St. Anne's Christmas Bazaar

DECEMBER

Parade Of Lights

thebenchgrill@gmail.com

Serving
Breakfast
Lunch and Dinner
Pizza



415 Winkleman Ave. • Marbleton WY



BIG RED Real Estate

Tracy Pape Broker/Owner

Helping you achieve your real estate dreams

307-260-6924 Cell 307-276-4900 Office

"We are in it for the long haul"



Also serving the Big Piney and Marbleton communities!
Call 307-367-4122

Country Chalet Inn Motel

9 Main Street
Marbleton, WY

307-276-3391
307-260-8431

Bob and Nancy Hanson



307-276-3413

Eiden Construction and Excavation LLC
Highway 189 Pinemar Subdivision
Marbleton, WY 83113



FAMILY ENTERTAINMENT CENTER

Movie Theater & Bowling Center

619 East 1st Street, Marbleton

Phone: 307.276.4066

Movie Line: 307.276.4062

Monday-Thursday: 3pm-10pm

Friday: 3pm - Midnight

Saturday: Noon to Midnight

Sunday: Noon-10pm

Frontier Pharmacy

501 North Nichols
Big Piney, WY
307-276-3499



"The best little thrift store in the West!"

Antiques—Collectables—Vintage Finds—Household Goods—
Gently Worn and New Clothing—and much more!

7 West 6th Street
Marbleton, WY

Just Imagine

305 Budd Ave
Big Piney, WY
307-276-5410

Fresh Flowers—Unique Gifts—Antiques—Locally—
Made Treasures—Home Décor and More



MARBLETON INN

MARBLETON, WYOMING
405 Winkleman
307-276-5231

Relax in one of our 34 cozy units, which include wireless internet,
satellite TV, ample parking with power access and nearby dining.

Obo's Market and Deli

10615 Highway 189

Your one stop for gas, groceries and a full deli,
featuring fresh items daily! Stop in let our
friendly staff help you with all of your needs.

Office Outlet
Your Business Service Center

BIG PINEY STORE
PO Box 929
306 Budd Ave.
Big Piney, WY 83113
307-276-5250
Fax 307-276-5254
bigpiney@offout.com



121 Smith Ave.
Big Piney, WY • 307.260.6234

Wyoming Waterworks
CARWASH
Splash-N-Dash
(307)260-6927
(307)260-6924

**FARM BUREAU
FINANCIAL SERVICES**

Joni Pennock
Agent

307.367.2141 Pinedale | 307.276.3327 Big Piney
jpennock@mfwb.com
525 S. Pine Street | Pinedale, WY 82941
421 Budd Avenue | Big Piney, WY 83113



Poor Boys Garage
Specializing in Early Chevy and Ford
Thorin & Garry
Owners / Operators
Office • 307-213-4300



JALANE & SHELBY – Hair
MICHELLE - Nails
Full Service Salon

201 Budd Ave. • Big Piney, WY 83113
307/276-5313



**WESTERN
VETERINARY
SERVICE**

Since 1990, this family owned business has been providing both large and small veterinary services to the Southwest, Wyoming area. Clinical, ambulatory and emergency calls are available year round. Let us be your "other" family doctor. "Taking care of God's critters in "God's country."

161 NORRIS STREET • BIG PINEY, WY • 307.276.5444



Zach Wenz
Producer

345 Budd Avenue
P.O. Box 793
Big Piney, WY 83113

Phone (307) 276-5221
Fax (307) 276-5625

zwenz@tegelerinsurance.com
www.tegelerinsurance.com



WESTBANK SANITATION
SERVING WESTERN WYOMING
PO Box 7810, Jackson, WY 83001
www.westbanksanitation.com

Teton County 307-733-2615	Lincoln County 307-654-9378	Sublette County 307-276-4460
------------------------------	--------------------------------	---------------------------------



**ALTITUDE
DRUG**
YOUR LOCALLY OWNED PHARMACY
HAPPY TO SERVE SUBLETTE COUNTY!
SPORT-CARE, SELF-CARE, APPAREL, GIFTS AND MORE!

709 W PINE STREET, PINEDALE • 215 BUDD AVE, BIG PINEY
307-367-2278

WILLIAMS AUTOMOTIVE INC
MARBLETON WY

205 EAST 5th St, Big Piney
(307) 276-3628



We're here to treat your aches and pains to get you back to the life you love.

Hours: Monday - Thursday 8:00 am - 4:30 pm
307-276-3050

**BANK OF THE WEST
BNP PARIBAS**

440 Budd Ave, Big Piney, WY
(307) 276-3961
www.bankofthewest.com



• FULL LINE GROCERY, LIVESTOCK FEED & FRIENDLY PEOPLE
• PROUDLY SERVING BIG PINEY AND SURROUNDING AREA FOR THE LAST 100 YEARS.
COME RIGHT IN THIS HOUSE – FRANK BURNEY (1914)

501 N Nichols St, Big Piney, WY (307) 276-3321

WATERHOLE
#3

- FULL SERVICE BAR
- DRAFT BEER & WINE
- BURGERS & PIZZA
- APPETIZERS
- GOLF SIMULATOR
- PING PONG
- POOL TABLES
- SMALL TOWN FEEL

MON - SAT: 11AM - 2AM • SUN: 11AM-10PM
417 MAIN ST., MARBLETON • 307-276-9977

Wyo Peak Electric LLC

Coleman Cummings 307-231-4001
Mike Olson 307-640-1223
wyopeakelectric@gmail.com
P.O. Box 675 Big Piney, WY 83113

SpeedGoat Gear
Bikepacking Gear Handmade in WY

SpeedGoatGear.co
307-260-3091



For more information please visit: fs.usda.gov/btnf or blm.gov

OUTDOOR RECREATION

MIDDLE PINEY RECREATION AREA

The Middle Piney Lake Trailhead leads to one of the most scenic areas in the Wyoming Range: upper Middle Piney Creek and Wyoming Peak. A historic lookout cabin on the summit of Wyoming Peak offers spectacular views of the surrounding mountain ranges.

This trail meets up with the Wyoming Range National Recreation Trail after passing a beautiful waterfall. Access road is single lane gravel surface with turn outs, and low-clearance vehicles are not advised.

The trailhead is located at Middle Piney Lake next to the campground. The Middle Piney Lake Campground has 5 sites and restroom facilities that can accommodate persons with disabilities.

> POPULAR TRAILS AND/OR DESTINATIONS ACCESSED

Wyoming Range National Recreation Trail, Upper Middle Piney Creek, Wohelo Falls, North Piney, Strait Creek, Fish Creek, South Piney, South Cottonwood, McDougal Gap

> POPULAR LAKES ACCESSED

Middle Piney Lake, North Piney Lake, Soda Lake

> POPULAR PEAKS ACCESSED

Wyoming Peak (highest peak in the Wyoming Range), Fish Creek Mountain, Darby Mountain, Mount McDougal, Lander Peak

FISH PONDS

In 2019 the Town of Marbleton added a wonderful opportunity for outdoor recreation with the addition of a community fishing pond. The fish pond is approximately 2.2 acres with a water feature, a beach area, a restroom, and future plans for a walking path and picnic tables. The pond is stocked annually by the Wyoming Game and Fish, and is open to fisherman of all ages and skill levels. Located at the East end of 5th Street, just off Red Hill Road

GUN RANGE

Public shooting range (pistol, rifle, trap, skeet) maintained by Gun Club with annual turkey shoot in November.

Located 7 miles west of Big Piney, WY on HWY 350. (307) 231-6788

GREEN RIVER FISHING ACCESS

South of Big Piney are several boat launch and fishing areas on the Green River. Take US Highway 189 south of Big Piney for 5 miles, then turn left (east) and continue 4 miles northeast to river at 5 Mile Bridge. Fear access (both upper and lower) has been upgraded with boat launches and restrooms. There are also walk in fishing areas along the Fear accesses points.

ICE RINK

Outside rink during winter months. Enjoy skating to music! Rentals available through Big Piney Recreation Center.

916 Piney Drive, Big Piney

SKATE PARK

4 Chalfant Ave, Marbleton

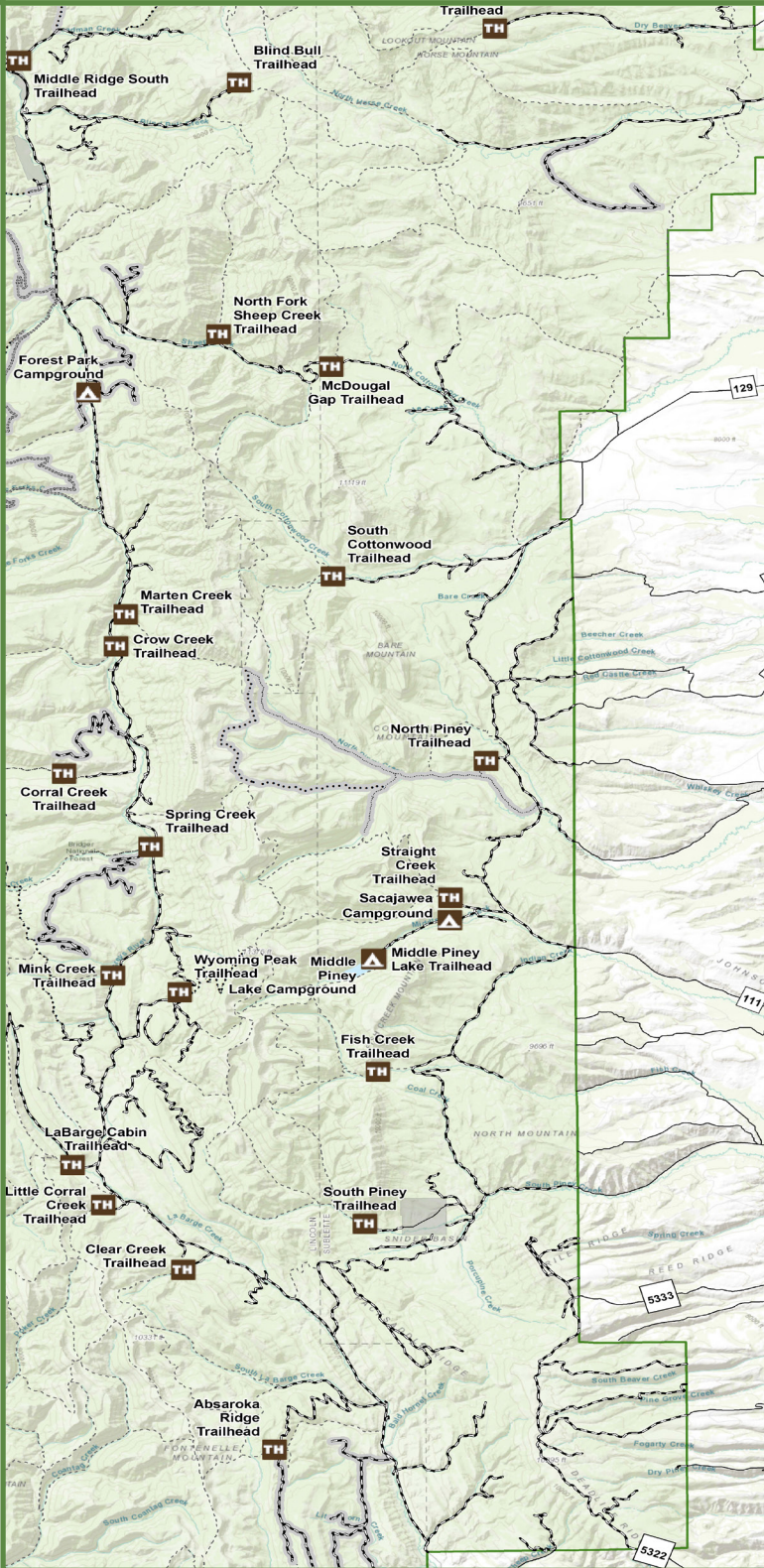
SUMMER IN THE WYOMING RANGE



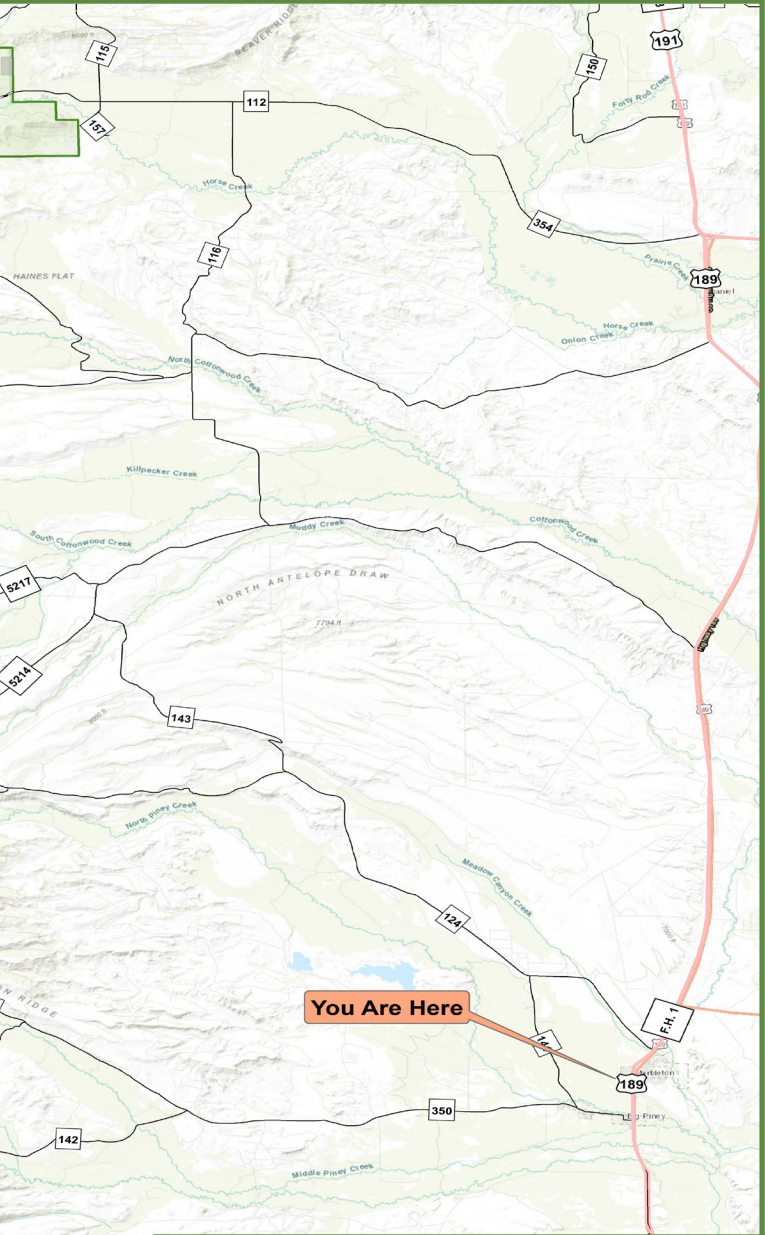
ENJOY A WEALTH OF ACTIVITIES IN THE WYOMING RANGE DURING SUMMER

- **Undeveloped Camping**
- **Numerous Streams for creek fishing**
- **Forest Service and BLM road network for ATVing**
- **Mountain Biking**
- **Rock Hounding**
- **Hiking/backpacking in minimally explored canyons**

RECREATION OPPORTUNITIES ON THE BRIDGER TETON NATIONAL FOREST



FOR MORE INFORMATION VISIT:
fs.usda.gov/btnf



Legend

- Campground
- Trailhead
- Main Highways
- Access Road

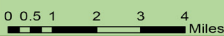
Open Road

- 1 Roads Open to All Vehicles, Yearlong
- 2 Roads Open to All Vehicles, Seasonal
- 11 Special Designation, Yearlong
- 14 State or US Highway
- 15 Other Public Roads

Motorized Trail

- 9 Trails Open to Motorcycles Only, Yearlong
- 10 Trails Open to Motorcycles Only, Seasonal
- 12 Special Designation, Seasonal
- 16 Trails Open to Wheeled Vehicles Only < 50" in Width, Yearlong
- 17 Trails Open to Wheeled Vehicles Only < 50" or Less in Width, Seasonal

- Hiking Trail
- Non-FS Land
- Bridger-Teton NF Boundary



ROCKHOUDING SUBLETTE CO.

By Roger McMannis, Field Trip Coordinator Sublette County Rockhounds



Anyone that is a rockhound has heard of the Blue Forest and Big Sandy area, but few have heard about our little slice of heaven when it comes to rocks and history in the exposed layers surrounding us.

There are a couple of things that make this area a great place to rock hunt.

Sublette County has 5000 square miles of public land to explore.

Second there is 165 million years of exposed evolution on the surface, just laying there for exploring. From Big Piney/Marbleton area it's 60 miles to the Blue Forest, 75 miles to Fossil Butte and 70 miles to the Big Sandy area. Locally a 20 to 30 minute drive will put you into good rock hunting in any direction.

A LITTLE HISTORY

Imagine traveling through Sublette County 175 million years ago in a barren desert, look to the west and east, no mountains. The Pacific Ocean was the western border of Idaho and Nevada. California, Oregon and Washington didn't exist.

Now jump forward 160 million years and all of Wyoming was under a mix of shallow sea and brackish freshwater (Late Jurassic era). The start of stromatolites is believed to have started 1.7 billion years ago in this area and carried through the Jurassic era. By 150 million years through tectonic plate shifts we were back to dry land.

140 million years ago the Wyoming range was formed, then another tectonic shift opened up the Western Seaway 105 million years ago lasting through to around 80 million years. For millions of years Sublette County was tropical.

This gives you an idea of why we have great variety of petrified woods from palm, pepper wood, hard woods and various conifers. Fossilized turtle and alligator poop, shark teeth, clam, various other shells and varieties of coral and stromatolites. The early through late Eocene era produced limestone layers with travertine, calcite crystals and agate.

40 million years ago the Wind River Range was formed and The Tetons 9 million years ago. You will find agate, stromatolite, coral, petrified wood, thin layers of calcite crystal, banded chert and the list goes on. Check out the area between Big Piney and LaBarge on the east side of the Green River. It gives you a great look at exposed strata, with the spring moisture and sunshine creating a wonderful painted vista. While exploring don't forget to check out the glacier rubble and uplifted river beds. If you are into polishing and capping these are great areas to find conglomerates, agate, quartz with jasper and more that are great for capping.

Remember to check out State and Federal collecting rules and regulations before you start out. Be respectful of private land and existing claims.

Be advised that we live in a critical winter deer range. Area is closed to motorized traffic from November 15th through April 30th.

While you're in the area make sure and stop by JL Gray Rock Shop, 614 E 3rd St. Marbleton, WY. Talk to Jim and Leane for more information on local rocks in the area. They have a good selection of rough and polished local rock on display to get a feel of what's in the area. Don't forget to ask Jim about the Sublette County Rockhounds Club with 150 plus members and local field trips monthly during the summer months.

➤ Be sure to visit blm.gov online for more information.

J L GRAY ROCK SHOP

**614 E. 3rd Street
Marbleton, Wyoming
(307) 260-6443
graysrocks@wyoming.com**

Facebook: [Friends of J L Gray Rock Shop](#)

Rough Rock, Slabs
Cabs, Beads, Findings
Jewelry, Belt Buckles, Bolas
Specimens, Fossils
Custom Cutting
Lapidary Classes
**Dealer for cutting oil,
equipment & supplies**

Rocky Mountain Federation of Mineralogical Societies convention
and Wyoming State Mineral and Gem Society

GEM & MINERAL SHOW

**Dealers, lectures, demos, exhibits, field trips, Mr. Bones, Fossil Butte
National Monument, walking fish fossil, kids activities, food & more!**

hosted by the Sublette County Rock Hounds (contact: jimgray@wyoming.com)

FATHER'S DAY WEEKEND • SUBLETTE COUNTY FAIRGROUNDS

10937 HWY 189 Big Piney WY / Admission \$2 adults / kids free

WINTER IN THE WYOMING RANGE

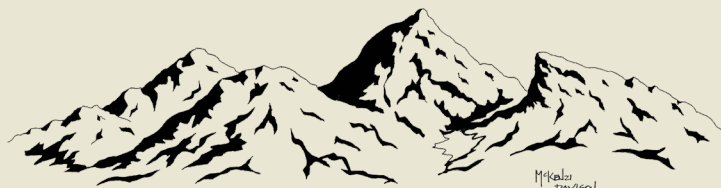


WYOMING RANGE SNOWMOBILING TRAILS

The Wyoming Range trails out of the east side of the Wyoming Range, is 20 miles from Big Piney, WY and remains largely unknown providing minimal crowds, lots of off trail deep powder, and unbelievable scenery. Groomed trails from Middle Piney to LaBarge Creek, Greys River area or north to Cotton Wood and McDougal Gap. Access connects all the way to Alpine!

WYOMING RANGE WINTER ACCESS AT MIDDLE PINEY

Enjoy cross county skiing, backcountry skiing, snowshoeing, snow biking.



BIG PINEY-MARBLETON

COMMUNITY DEVELOPMENT

"Where the Desert Meets the Mountains"

WWW.BIGPINEY-MARBLETON.COM



@Big-Piney-Marbleton-Community-Development



@bigpineymarbleton